

LucidTM

Technologies & Solutions

Building the Intelligent EnterpriseTM

Embedded analytics dashboards in Collibra using Sisense

SERVICES PROFILE

LUCID TECHNOLOGIES AND SOLUTIONS IS AN IMPLEMENTATION AND REFERRAL PARTNER OF SISENSE.

ADVISORY – HELPING CUSTOMERS DEVELOP IMPLEMENTATION ROADMAPS

IMPLEMENTATION – SETUP TO CUSTOMIZATIONS WITH ACCELERATORS

INTEGRATION/AUTOMATION – LEVERAGE OUR DIFFERENTIATOR AS METADATA EXPERTS

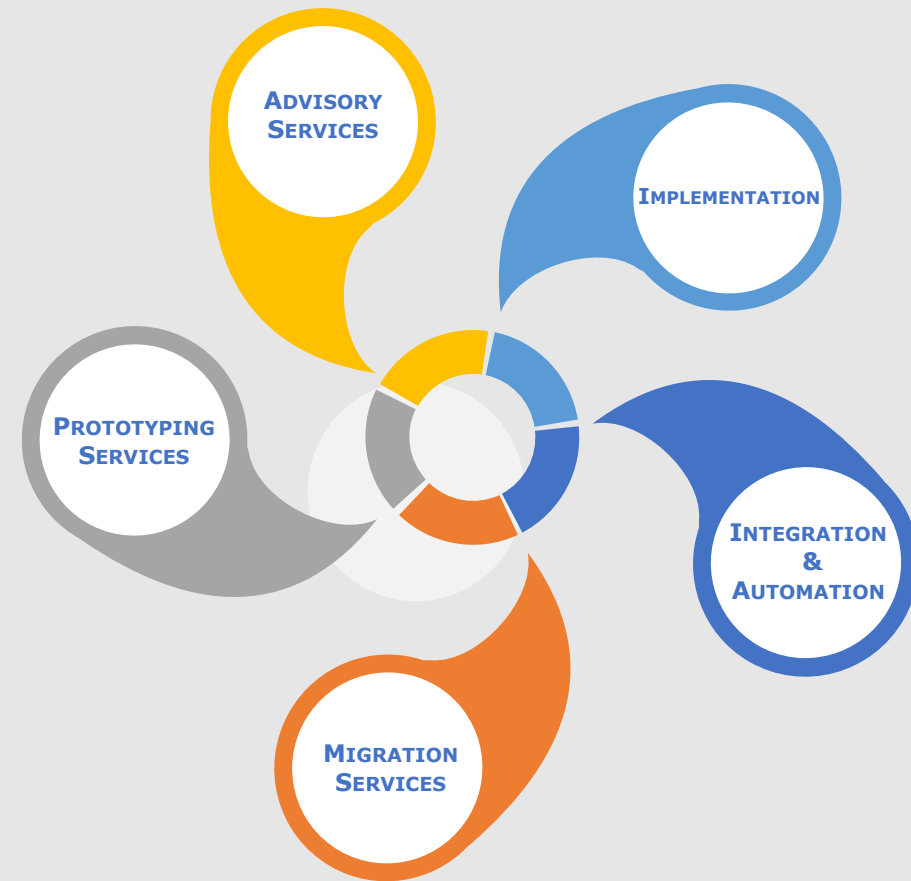
MIGRATION – ACCELERATORS AND UTILITIES

PROTOTYPING – HELP UNCOVER NEW USE CASES AND EXTEND PLATFORM INVESTMENTS

OUR APPROACH IS HELPING CUSTOMERS DERIVE INCREMENTAL BUSINESS VALUE IN A PHASED APPROACH



Building the Intelligent EnterpriseTM



Lucid's Embedded analytics dashboards in Collibra using Sisense provides ability to embed advanced Sisense analytics widgets in the Collibra dashboards leveraging the rich governance data within Collibra. It uses the new Sisense beta feature of Python module embedded with ElastiCube module.

Key Features:

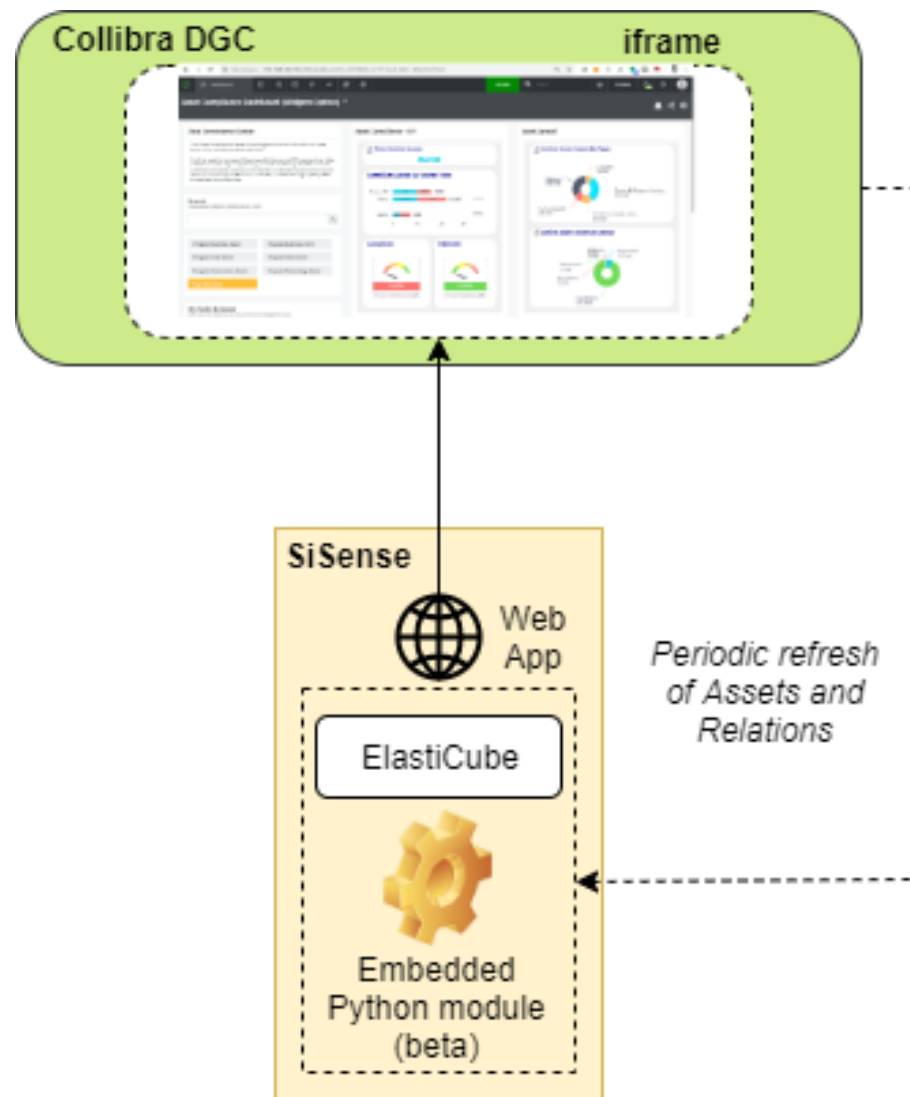
- Lucid-built Sisense dashboards provides all customers with embedded advanced analytics (exploratory paths, trend prediction, anomaly detection etc.)
- It provides a quick start with the pre-built dashboards and reports, and additional reports can be added as required
- Lucid's architecture allows access to a wider range of Collibra and external data
- Embedded dashboards inherit Collibra's permissions
- Lucid's extensive Collibra experience and Sisense industry leading capabilities provide deeper insights, crafted specifically for your business needs

View a short **demo** of the dashboards at: <https://youtu.be/dnb4uFHIM8M>

Product versions supported:

- Collibra Data Governance Centre v5.6.x, v5.7.x
- Sisense version L8.2.1 Linux edition with Python module embedded in ElastiCube model (beta)

Lucid's Architecture enables analytics on both Collibra and external data.



Sisense widgets embedded within Collibra dashboard as the dashboard widgets, each widget providing the needed analysis capabilities like the ability to drill down and filtering etc.

Governance Dashboard - Widget display
Governance Dashboard widgets embedded along with other Collibra widgets

Data Governance Center
The Data Governance Center is the single source of truth of all our data governance and stewardship activities.
It will be used to manage all business definitions and KPIs, support our data stewards in their day to day activity, provide traceability between business and technical assets, policies and rules. It is a vital step toward achieving our vision of commonly understood, consistent, trusted and high-quality data throughout the enterprise.

Search
Find assets, domains, communities, users...

Workflow
List of buttons to start workflows.

- Log Issue
- Propose Business Asset
- Propose Business Term
- Propose Code Value
- Propose Data Asset
- Propose Governance Asset
- Propose Technology Asset

Asset Governance - KPI

- Total Assets**: 276.72K
- Governed Assets Over Time**: 101.47K
- Governed**: 36.67% (# Assets Governed 101.47K)
- Non-Governed**: 63.33% (# Assets Non Governed 175.25K)

Asset Governance - Spread

- Asset Count By Category**:

Category	Count	Percentage
SSAS	137K	50%
Power BI	58.2K	21%
Hive	54.6K	20%
Business Assets	23.76K	-
Others	3.13K	-
- Asset Count By Status**:

Status	Count
Compliant	99.75K
Candidate	175.3K
Under Review	174
Deprecated	544
Not Compliant	1K

Drill down to see the underlying assets with link to the same in the Collibra instance.

Dashboard
Create Search 2 tasks

Governance Dashboard - Widget display

Data Governance Center

The Data Governance Center is the single source of truth of all our data governance and stewardship activities.

It will be used to manage all business definitions and KPIs, support our data stewards in their day to day activity, provide traceability between business and technical assets, policies and rules. It is a vital step toward achieving our vision of commonly understood, consistent, trusted and high-quality data throughout the enterprise.

Search

Find assets, domains, communities, users...

Workflow

List of buttons to start workflows.

Log Issue

Propose Business Asset

Propose Business Term

Propose Code Value

Propose Data Asset

Propose Governance Asset

Propose Technology Asset

Asset Governance - KPI

Total Assets

Asset Details

Asset	Asset URL	Asset Type	Asset Status
_Total Defect Qty Status	Link	Power BI Measure	Candidate
_SYS_BIC	Link	Schema	Candidate
_RevenueTY Status	Link	Column	Candidate
_RevenueTY Status	Link	Column	Candidate
_RevenueTY Status	Link	Power BI Measure	Candidate
_RevenueTY Status	Link	Power BI Report Attribute	Compliant
_Actual/Plan Status	Link	Power BI Measure	Candidate
_Actual/Plan Goal	Link	Power BI Report Attribute	Compliant
[Zipcode Suffix]	Link	Tableau Data	Candidate

Asset Governance - Spread

Asset Count By Category

Category	Count	Percentage
SSAS	137K	90%
Power BI	58.2K	21%
Hive	54.6K	20%
Others	3.13K	

Asset Count By Status

Asset Count - Compliant
 99.75K / 36%

On clicking the widget, the underlying data can be drilled into

To Do
Get a list of all tasks/issues or just the ones assigned to you

2 Tasks
Issues 0
Due Date ▾

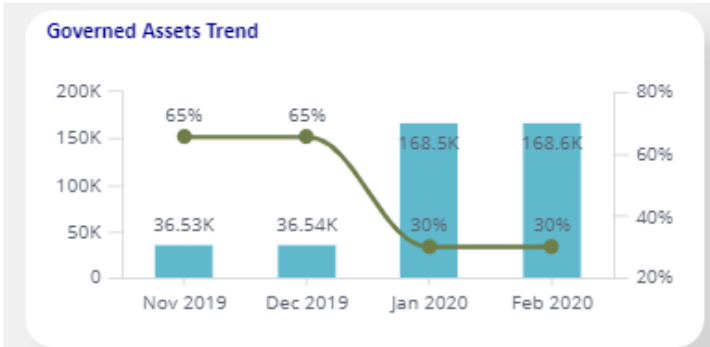
Score Rules in a month

For Relevancy Search Score Rules

Add / Edit Display Rule in a month

◀ Show All

Asset Governance - Trend



Asset Details

Asset	Asset URL	Asset Type
SalesAmount	Link	Business Term
Profit	Link	Business Term
OrderDate	Link	Business Term
List Price	Link	Business Term
Customer	Link	Business Term
Suggested Retail Price	Link	Business Term
Sale Value	Link	Business Term
Postal Code	Link	Business Term
Manager	Link	Business Term
Country	Link	Business Term
Region	Link	Business Term
ID	Link	Business Term
Social Security Number	Link	Business Term

« < 1 2 3 4 5 6 7 ... 17 > »

Rows 14-26

Deep analysis option to view trend prediction using predictive models such as Linear Regression...

To Do
Get a list of all tasks/issues or just the ones assigned to you

2 Tasks Issues 0

Due Date ▾

Score Rules
For Relevancy Search Score Rules in a month

Add / Edit Display Rule in a month

◀ Show All

Asset Governance - Trend

Governed Assets % - Prediction

Month	Actual (%)	Predicted (%)
2019-01-01	20.02%	
2019-02-01	55.24%	
2019-03-01	29.05%	
2019-04-01	29.42%	
2019-05-01	71.2%	
2019-06-01	71.31%	
2019-07-01	71.33%	
2019-08-01	51.01%	
2019-09-01	46.96%	
2019-10-01	46.93%	
2019-11-01	51.6%	
2019-12-01	51.6%	
2020-01-01	36.56%	
2020-02-01	36.59%	
2020-03-01	36.64%	
2020-04-01	36.67%	
2020-05-01	42.63%	

Asset Details

Asset Type ^

- Business Term
- Business Term
- Business Term
- Business Term
- Business Term
- Business Term
- Business Term
- Business Term
- Business Term
- Business Term
- Business Term
- Business Term
- Business Term
- Business Term
- Business Term

17 18 19 20 21 22 23

24 25 26 27 28 29 30

« < 1 2 3 4 5 6 7 ... 17 > »

Rows 14-26

On clicking the 'Deep Analysis' option in the Trend chart, shows up the predicted trend

Lucid Technologies & Solutions *Sample Dashboard with a Tabbed display – KPIs...*

Tabbed dashboard embedded as one single widget in the Collibra dashboard – showing KPIs. Each of the tabs provide the needed analysis capabilities like the ability to drill down and filtering etc.

The screenshot displays the 'Collibra Governance Dashboard' interface. At the top, there is a navigation bar with icons for Dashboard, a 'Create' button, a search bar, and a notification for '2 tasks'. Below this is a header for the 'Governance Dashboard - Tabbed Display' with a dropdown arrow and user profile icons. The main dashboard area features the Lucid logo, the title 'Collibra Governance Dashboard', and the timestamp '7/15/2020 6:00 AM IST'. A tabbed interface is active, with 'KPI' selected and other tabs for 'ASSET SPREAD', 'ASSET GOVERNANCE', and 'ASSET DETAILS'. The dashboard contains four primary KPI cards: 'Total Assets' (276.72K), 'Governed Assets Over Time' (101.47K with a step chart), 'Governed Assets' (36.67% with a gauge chart and '# Assets Governed 101.47K'), and 'Non-Governed Assets' (63.33% with a gauge chart and '# Assets Non Governed 175.25K'). A 'Filters' sidebar on the right allows for filtering by 'Category' and 'Asset Status', each with an 'Include all' button and a toggle switch.

Exploratory path analysis on assets enables viewing Top 'n' and trend charts...

Exploration Paths - Total Assets

Break By Trends over Time

Assets
by assetTypeName (Top 10)

Asset Type	Count (Approximate)
Power...	10K
Table...	10K
Power...	15K
Power...	15K
SSAS ...	15K
Busin...	25K
Power...	35K
SSAS ...	40K
Power...	50K
Colu...	55K

I found this useful

On clicking the bulb icon on relevant charts, the exploratory analysis pops-up

Lucid™ *Sample Dashboard with a Tabbed display – Asset Spread*

Tabbed dashboard embedded as one single widget in the Collibra dashboard – showing the Asset spread

Collibra Governance Dashboard 7/15/2020 6:00 AM IST

KPI | **ASSET SPREAD** | ASSET GOVERNANCE | ASSET DETAILS

All Assets | Governed Assets | Non-Governed Assets

Asset Count By Category

Category	Count	Percentage
SSAS	137K	50%
Power BI	58.2K	21%
Hive	54.6K	20%
Business Assets	23.76K	9%
Others	3.13K	9%

Asset Count By Status

Status	Count	Percentage
Candidate	175.3K	63%
Compliant	99.75K	36%
Under Review	174	-
Deprecated	544	-
Not Compliant	1K	-

Filters

- Category: Include all
- Asset Status: Include all

Tabbed dashboard embedded as one single widget in the Collibra dashboard – showing the Asset governance metrics

Dashboard Create Search 2 tasks

Governance Dashboard - Tabbed Display

Collibra Governance Dashboard

7/15/2020 6:00 AM IST

KPI
ASSET SPREAD
ASSET GOVERNANCE
ASSET DETAILS

Governed Assets Trend

Month	Asset Count	Governed Assets %
Jan 2019	1.68K	
Feb 2019		55%
Mar 2019	11.32K	49%
Apr 2019		
May 2019	43.78K	71%
Jun 2019		71%
Jul 2019	44.29K	71%
Aug 2019		52%
Sep 2019	82.51K	47%
Oct 2019		47%
Nov 2019	109.7K	
Dec 2019	144.3K	52%
Jan 2020		37%
Feb 2020	276.2K	37%
Mar 2020		37%
Apr 2020	276.7K	37%

Governed Assets % By Date

SEPTEMBER 2019

S	M	T	W	T	F	S
1	2	3	4	5	6	7
8	9	10	11	12	13	14
15	16	17	18	19	20	21
22	23	24	25	26	27	28
29	30					

Filters

Category Include all

Asset Status Include all

Lucid™ *Sample Dashboard with a Tabbed display – Asset Details*

Tabbed dashboard embedded as one single widget in the Collibra dashboard – showing the Asset details with link to the actual assets in the Collibra instance

Collibra Governance Dashboard 7/15/2020 6:00 AM IST

KPI | ASSET SPREAD | ASSET GOVERNANCE | **ASSET DETAILS**

Asset Details

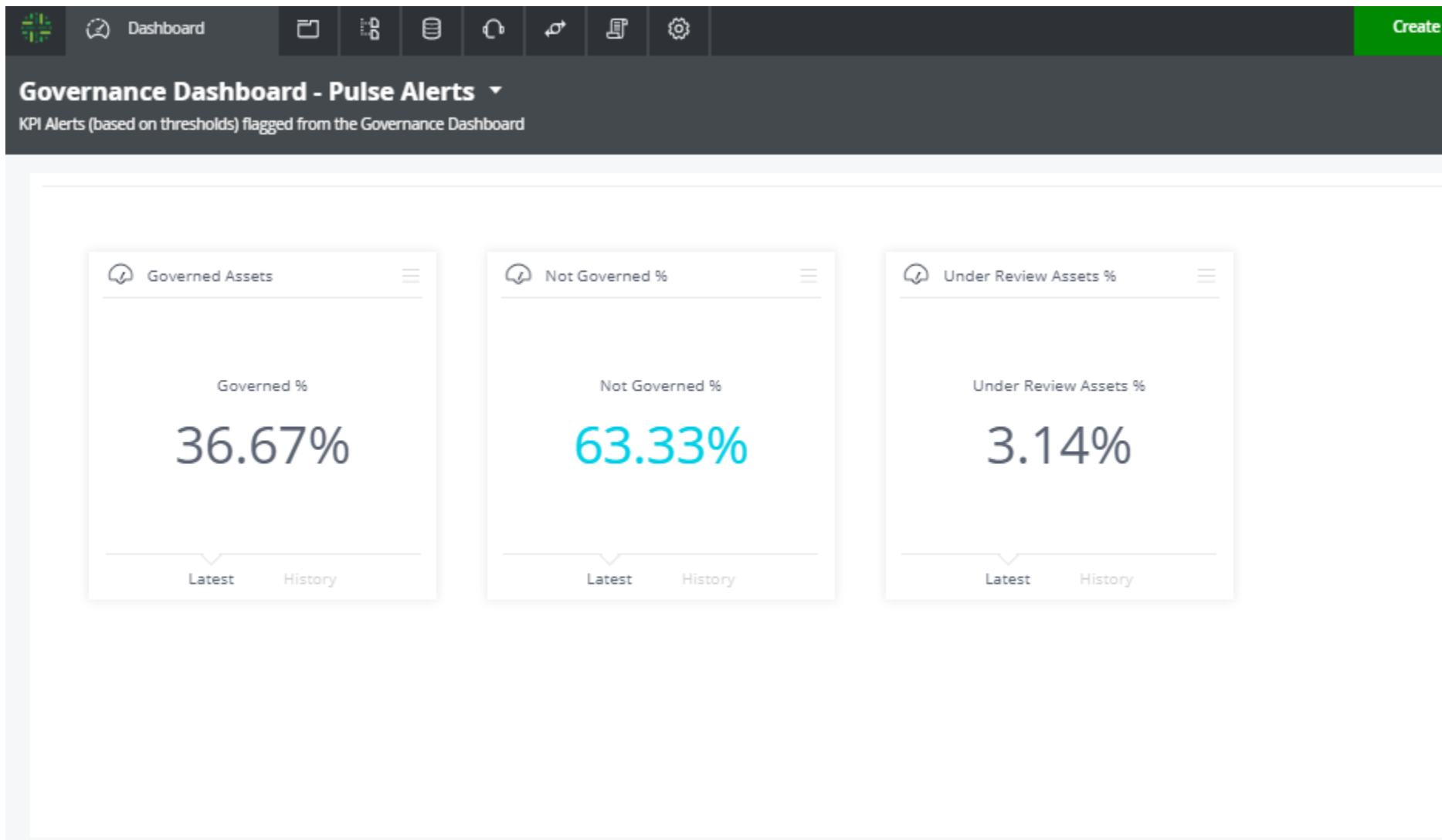
Asset	Asset URL	Asset Type	Asset Status
Mapping Specification > HDB_Package/CV_SALES_A	Link	Mapping Specification	Approved
Product_Name	Link	View Column	Approved
Sub-Category	Link	View Column	Approved
PO_STATUS	Link	View Column	Approved
PUR_ORG	Link	View Column	Approved
PO_NUMBER	Link	View Column	Approved
COMPANY	Link	View Column	Approved
Mapping Specification > HDB_Package/AV_PURCHASEORDER	Link	Mapping Specification	Approved

« < 1 2 3 4 5 6 7 ... 28 > » Rows 1-8

Filters

- Category
 - [Include all](#)
 -
- Asset Status
 - [Include all](#)
 -

Sisense Pulse Alerts help to detect and notify anomalies, variations on the KPIs tracked, making them actionable





Intelligent Data Solutions Designed & Delivered

www.lucidtechsol.com

Srinath Jagannathan | srinathj@lucidtechsol.com | 610 849 0798